

LANDSCAPE FOR BREEDING AND TRAINING
OF CEREMONIAL CARRIAGE HORSES
AT KLADRUBY NAD LABEM

2

NOMINATED PROPERTY IN PICTURES

Annex 2
Nominated Property in Pictures

CZECH REPUBLIC
2018

LANDSCAPE FOR BREEDING AND TRAINING
OF CEREMONIAL CARRIAGE HORSES
AT KLADRUBY NAD LABEM

2

NOMINATED PROPERTY
IN PICTURES

Annex 2
Nominated Property in Pictures

CZECH REPUBLIC
2018

Contents

2.1	PHOTOGRAPHS DOCUMENTING THE PRESENT STATE OF THE NOMINATED PROPERTY	5
	List of visual materials subject to authorisation including copyrights	6
	List of other visual materials	13
1	Visual materials subject to copyright	17
2	Other visual materials	49
2.1	Aerial photographs of the Nominated Property	49
2.2	Vegetation components of the Nominated Property	51
2.2.1	Vegetation accompanying roads and watercourses	51
2.2.2	Groups of trees on pastures (clumps)	54
2.3	Romantic Landscape Park of Mošnice	55
2.4	Production forest	60
2.5	Water features in the landscape	61
2.6	Farmsteads with stables on the site of the Nominated Property	63
2.6.1	Kladruby nad Labem farmstead	63
2.6.2	Františkov farmstead	75
2.6.3	Josefov farmstead	78
2.7	Other important buildings on the site of the Nominated Property	80
2.8	Artefacts on the site of the Nominated Property	83
2.9	Kladruher gala carrossier in training and service	86
2.10	Nominated Property and its visitors	93
2.2	HISTORICAL PICTURES OF THE NOMINATED PROPERTY	97
	List of historical pictures of the Nominated Property	98
1	Prints of historic artworks	100
2	Prints of historical photographs	106

LANDSCAPE FOR BREEDING AND TRAINING
OF CEREMONIAL CARRIAGE HORSES
AT KLADRUBY NAD LABEM

2.1

PHOTOGRAPHS DOCUMENTING THE PRESENT STATE OF THE NOMINATED PROPERTY

Annex 2
Nominated Property in Pictures

CZECH REPUBLIC
2018

List of visual materials subject to authorisation including copyrights:

Id. No.	Caption	
001	Satellite picture of the Nominated Property. Kladruby nad Labem farmstead and the village on the right, Františkov farmstead on the left. The landscape for breeding and training carriage horses stretches between these two farmsteads and it features formally arranged pastures and grassland (in the centre), Landscaped park (to the south) and production forest (to the north).	
Format	Non exclusive cession of rights	Yes
	Photographer Contact details of copyright owner	Military Geographic and Hydrometeorological Office, Čs. odboje 676, Dobruška 518 16, © Czech Ministry of Defence 2017; Národní hřebčín Kladruby nad Labem, s.p.o. CZ 533 14 Kladruby nad Labem, tel. +420 466 736 530, e-mail: kladruby@nhkladruby.cz
Digital	Date of photo	08/2015
Id. No.	Caption	
002	The Nominated Property from the west. The Františkov farmstead is in front with the axially situated farmstead at Kladruby nad Labem in the background; the village of Selmice is in front to the right.	
Format	Non exclusive cession of rights	Yes
	Photographer Contact details of copyright owner	Kelcom International spol. s.r.o. Tomkova 142, Hradec Králové 500 03; Národní hřebčín Kladruby nad Labem, s.p.o. CZ 533 14 Kladruby nad Labem, tel. +420 466 736 530, e-mail: kladruby@nhkladruby.cz
Digital	Date of photo	06/2017
Id. No.	Caption	
003	The Nominated Property from the west from a lower viewpoint. The Františkov farmstead is in front, and the village of Selmice to the right.	
Format	Non exclusive cession of rights	Yes
	Photographer Contact details of copyright owner	Jiří Podrazil Národní hřebčín Kladruby nad Labem, s.p.o. CZ 533 14 Kladruby nad Labem, tel. +420 466 736 530, e-mail: kladruby@nhkladruby.cz
Digital	Date of photo	10/2017

Id. No.	Caption	
004	The Nominated Property from the east. The Josefov farmstead is in front with Kladruby nad Labem farmstead and village to the right; the Elbe river on the left outlines the southern border of the property and meanders about its former riverbed. The middle shows the orderly composition of pastures, divided by lines of trees and avenues.	
Format	Non exclusive cession of rights	Yes
	Photographer Contact details of copyright owner	Kelcom International spol. s.r.o. Tomkova 142, Hradec Králové 500 03; Národní hřebčín Kladruby nad Labem, s.p.o. CZ 533 14 Kladruby nad Labem, tel. +420 466 736 530, e-mail: kladruby@nhkladruby.cz
Digital	Date of photo	06/2017
Id. No.	Caption	
005	The Nominated Property from the south with the Mošnice Landscape Park (in front), the formally arranged grazing landscaped in the middle and the production forest in the background.	
Format	Non exclusive cession of rights	Yes
	Photographer Contact details of copyright owner	Jiří Podrazil Národní hřebčín Kladruby nad Labem, s.p.o. CZ 533 14 Kladruby nad Labem, tel. +420 466 736 530, e-mail: kladruby@nhkladruby.cz
Digital	Date of photo	10/2016
Id. No.	Caption	
006	The Kladruby nad Labem farmstead from the north-east. On the left is the Manor House with St Wenceslas and Leopold's Church, stables and residential buildings for the staff to the right; in the background is Selmická Avenue, leading towards the Františkov farmstead.	
Format	Non exclusive cession of rights	Yes
	Photographer Contact details of copyright owner	Aerodata, s.r.o. Národní hřebčín Kladruby nad Labem, s.p.o. CZ 533 14 Kladruby nad Labem, tel. +420 466 736 530, e-mail: kladruby@nhkladruby.cz
Digital	Date of photo	06/2017
Id. No.	Caption	
007	View of the strictly symmetric main stables at Kladruby nad Labem. The main composition axes of the Nominated Landscape meet at the arched gate. The stud (breeding stallion) stable is in the background and the water tower on the left. South-western view.	
Format	Non exclusive cession of rights	Yes
	Photographer Contact details of copyright owner	Aerodata, s.r.o. Národní hřebčín Kladruby nad Labem, s.p.o. CZ 533 14 Kladruby nad Labem, tel. +420 466 736 530, e-mail: kladruby@nhkladruby.cz
Digital	Date of photo	10/2016

Id. No.	Caption	
008	Františkov farmstead from the east. In the background, pastures divided by paths and watercourses lined with trees. The “infinite” axis crosses the farmstead towards the west.	
Format	Non exclusive cession of rights	Yes
	Photographer Contact details of copyright owner	Jiří Podrazil Národní hřebčín Kladruby nad Labem, s.p.o. CZ 533 14 Kladruby nad Labem, tel. +420 466 736 530, e-mail: kladruby@nhkladruby.cz
Digital	Date of photo	06/2017
Id. No.	Caption	
009	Detail of the landscape composition around the Františkov farmstead. View from the north-east.	
Format	Non exclusive cession of rights	Yes
	Photographer Contact details of copyright owner	Jiří Podrazil Národní hřebčín Kladruby nad Labem, s.p.o. CZ 533 14 Kladruby nad Labem, tel. +420 466 736 530, e-mail: kladruby@nhkladruby.cz
Digital	Date of photo	06/2017
Id. No.	Caption	
010	Josefov farmstead situated in the south-east part of the Nominated Property. View from the west.	
Format	Non exclusive cession of rights	Yes
	Photographer Contact details of copyright owner	Aerodata, s.r.o. Národní hřebčín Kladruby nad Labem, s.p.o. CZ 533 14 Kladruby nad Labem, tel. +420 466 736 530, e-mail: kladruby@nhkladruby.cz
Digital	Date of photo	10/2016
Id. No.	Caption	
011	Landscape south of the Kladruby nad Labem farmstead. Avenues and lines of trees form a star with six rays (étoile). On the pastures there are clumps of trees. View from the south-east.	
Format	Non exclusive cession of rights	Yes
	Photographer Contact details of copyright owner	Jiří Podrazil Národní hřebčín Kladruby nad Labem, s.p.o. CZ 533 14 Kladruby nad Labem, tel. +420 466 736 530, e-mail: kladruby@nhkladruby.cz
Digital	Date of photo	10/2017
Id. No.	Caption	
012	Pastures in the centre of the Nominated Property divided by driveways and watercourses lined with trees and avenues forming “rooms” resembling bosquets in French gardens or “cabinet de verdure”. View from the east.	
Format	Non exclusive cession of rights	Yes
	Photographer Contact details of copyright owner	Jiří Podrazil Národní hřebčín Kladruby nad Labem, s.p.o. CZ 533 14 Kladruby nad Labem, tel. +420 466 736 530, e-mail: kladruby@nhkladruby.cz
Digital	Date of photo	10/2016

Id. No.	Caption	
013	Water mirror of an oxbow lake formed by the Elbe River in the western part of the Mošnice Landscaped Park. View from the east.	
Format	Non exclusive cession of rights	Yes
	Photographer Contact details of copyright owner	Jiří Podrazil Národní hřebčín Kladruby nad Labem, s.p.o. CZ 533 14 Kladruby nad Labem, tel. +420 466 736 530, e-mail: kladruby@nhkladruby.cz
Digital	Date of photo	06/2017
Id. No.	Caption	
014	Eastern part of the Mošnice Landscaped Park viewed from the west; the part of the Nominated Landscape resembling English landscape architecture.	
Format	Non exclusive cession of rights	Yes
	Photographer Contact details of copyright owner	Jiří Podrazil Národní hřebčín Kladruby nad Labem, s.p.o. CZ 533 14 Kladruby nad Labem, tel. +420 466 736 530, e-mail: kladruby@nhkladruby.cz
Digital	Date of photo	06/2017
Id. No.	Caption	
015	View to infinity from the Řečanská Gate at the Kladruby nad Labem to the south-west into the Řečanská Avenue lined with lime trees (<i>Tilia cordata</i>).	
Format	Non exclusive cession of rights	Yes
	Photographer Contact details of copyright owner	Jiří Podrazil Národní hřebčín Kladruby nad Labem, s.p.o. CZ 533 14 Kladruby nad Labem, tel. +420 466 736 530, e-mail: kladruby@nhkladruby.cz
Digital	Date of photo	10/2016
Id. No.	Caption	
016	Carriage driveway lined with northern red oaks (<i>Quercus rubra</i>) leading to the Mošnice Landscaped Park. The vegetation along the Kladrubský náhon irrigation system in the background.	
Format	Non exclusive cession of rights	Yes
	Photographer Contact details of copyright owner	Věra Kučová Národní hřebčín Kladruby nad Labem, s.p.o. CZ 533 14 Kladruby nad Labem, tel. +420 466 736 530, e-mail: kladruby@nhkladruby.cz
Digital	Date of photo	10/2016
Id. No.	Caption	
017	Carriage driveway towards the Josefov farmstead, lined with old species of apple trees.	
Format	Non exclusive cession of rights	Yes
	Photographer Contact details of copyright owner	Magdaléna Straková Národní hřebčín Kladruby nad Labem, s.p.o. CZ 533 14 Kladruby nad Labem, tel. +420 466 736 530, e-mail: kladruby@nhkladruby.cz
Digital	Date of photo	07/2017

Id. No.	Caption	
018	Pasture inside one of the cabinet de verdure with a picturesque clump of trees situated between Kladruby nad Labem and Josefov. Typical white fencing of pastures in the background.	
Format	Non exclusive cession of rights	Yes
	Photographer Contact details of copyright owner	Michaela Dusíková Národní hřebčín Kladruby nad Labem, s.p.o. CZ 533 14 Kladruby nad Labem, tel. +420 466 736 530, e-mail: kladruby@nhkladruby.cz
Digital	Date of photo	10/2016
Id. No.	Caption	
019	Gently winding carriage driveway in the Mošnice Landscaped Park, the routing of which allows in-hand driving of team of horses.	
Format	Non exclusive cession of rights	Yes
	Photographer Contact details of copyright owner	Magdaléna Straková Národní hřebčín Kladruby nad Labem, s.p.o. CZ 533 14 Kladruby nad Labem, tel. +420 466 736 530, e-mail: kladruby@nhkladruby.cz
Digital	Date of photo	08/2016
Id. No.	Caption	
020	Use of perspective in the Mošnice Landscaped Park for boosting the illusion of depth in a similar way to paintings.	
Format	Non exclusive cession of rights	Yes
	Photographer Contact details of copyright owner	Jiří Podrazil Národní hřebčín Kladruby nad Labem, s.p.o. CZ 533 14 Kladruby nad Labem, tel. +420 466 736 530, e-mail: kladruby@nhkladruby.czz
Digital	Date of photo	05/2017
Id. No.	Caption	
021	Paddock for stallions with typical white fencing. In the background is the south wing of the stables at Kladruby nad Labem with the Řečanská Gate and Řečanská Avenue.	
Format	Non exclusive cession of rights	Yes
	Photographer Contact details of copyright owner	Jiří Podrazil Národní hřebčín Kladruby nad Labem, s.p.o. CZ 533 14 Kladruby nad Labem, tel. +420 466 736 530, e-mail: kladruby@nhkladruby.cz
Digital	Date of photo	10/2017
Id. No.	Caption	
022	One of the branches of the Kladrubský náhon irrigation and drainage system. Pastures with typical white fencing.	
Format	Non exclusive cession of rights	Yes
	Photographer Contact details of copyright owner	Jiří Machek Národní hřebčín Kladruby nad Labem, s.p.o. CZ 533 14 Kladruby nad Labem, tel. +420 466 736 530, e-mail: kladruby@nhkladruby.cz
Digital	Date of photo	03/2017

Id. No.	Caption	
023	Oxbow lake of the Elbe River in the south-eastern part on the Nominated Property.	
Format	Non exclusive cession of rights	Yes
	Photographer Contact details of copyright owner	Aerodata, s.r.o. Národní hřebčín Kladruby nad Labem, s.p.o. CZ 533 14 Kladruby nad Labem, tel. +420 466 736 530, e-mail: kladruby@nhkladruby.cz
Digital	Date of photo	10/2016
Id. No.	Caption	
024	Edge of the production forest at the northern part of the Nominated Property.	
Format	Non exclusive cession of rights	Yes
	Photographer Contact details of copyright owner	Jiří Podrazil Národní hřebčín Kladruby nad Labem, s.p.o. CZ 533 14 Kladruby nad Labem, tel. +420 466 736 530, e-mail: kladruby@nhkladruby.cz
Digital	Date of photo	10/2017
Id. No.	Caption	
025	Kladruby nad Labem main courtyard (cour d'honneur) surrounded by the Classicist stables, St Wenceslas and Leopold Church, the Manor House and south wing with the entrance gate. View from the west.	
Format	Non exclusive cession of rights	Yes
	Photographer Contact details of copyright owner	Archive of the National Stud Farm Národní hřebčín Kladruby nad Labem, s.p.o. CZ 533 14 Kladruby nad Labem, tel. +420 466 736 530, e-mail: kladruby@nhkladruby.cz
Digital	Date of photo	08/2017
Id. No.	Caption	
026	Stables for studs (breeding stallions) at the Kladruby nad Labem farmstead.	
Format	Non exclusive cession of rights	Yes
	Photographer Contact details of copyright owner	Archive of the National Stud Farm Národní hřebčín Kladruby nad Labem, s.p.o. CZ 533 14 Kladruby nad Labem, tel. +420 466 736 530, e-mail: kladruby@nhkladruby.cz
Digital	Date of photo	08/2016
Id. No.	Caption	
027	Stables for breeding mares at the Kladruby nad Labem farmstead.	
Format	Non exclusive cession of rights	Yes
	Photographer Contact details of copyright owner	Jiří Podrazil Národní hřebčín Kladruby nad Labem, s.p.o. CZ 533 14 Kladruby nad Labem, tel. +420 466 736 530, e-mail: kladruby@nhkladruby.cz
Digital	Date of photo	08/2016

Id. No.	Caption	
028	Courtyard at the Františkov farmstead with four oaks (<i>Quercus robur</i>) planted in the middle. View from the north west.	
Format	Non exclusive cession of rights	Yes
	Photographer Contact details of copyright owner	Jiří Podrazil Národní hřebčín Kladruby nad Labem, s.p.o. CZ 533 14 Kladruby nad Labem, tel. +420 466 736 530, e-mail: kladruby@nhkladruby.cz
Digital	Date of photo	09/2017
Id. No.	Caption	
029	Architectural and vegetation layout emphasising the axial “infinity” of the Nominated Landscape. View through the gate of the Františkov farmstead to Selmická Avenue. The symmetric planting of oaks in front (<i>Quercus robur</i>).	
Format	Non exclusive cession of rights	Yes
	Photographer Contact details of copyright owner	Jiří Podrazil Národní hřebčín Kladruby nad Labem, s.p.o. CZ 533 14 Kladruby nad Labem, tel. +420 466 736 530, e-mail: kladruby@nhkladruby.cz
Digital	Date of photo	09/2017
Id. No.	Caption	
030	The foal stable at the Františkov farmstead with semi-columns supporting the vault.	
Format	Non exclusive cession of rights	Yes
	Photographer Contact details of copyright owner	Šárka Veinhauerová Národní hřebčín Kladruby nad Labem, s.p.o. CZ 533 14 Kladruby nad Labem, tel. +420 466 736 530, e-mail: kladruby@nhkladruby.cz
Digital	Date of photo	07/2017
Id. No.	Caption	
031	Kladruber stud. The Kladruby nad Labem farmstead.	
Format	Non exclusive cession of rights	Yes
	Photographer Contact details of copyright owner	Magdaléna Straková Národní hřebčín Kladruby nad Labem, s.p.o. CZ 533 14 Kladruby nad Labem, tel. +420 466 736 530, e-mail: kladruby@nhkladruby.cz
Digital	Date of photo	08/2017
Id. No.	Caption	
032	Team of eight horses in the Řečanská Avenue.	
Format	Non exclusive cession of rights	Yes
	Photographer Contact details of copyright owner	Marcela Kvochová Národní hřebčín Kladruby nad Labem, s.p.o. CZ 533 14 Kladruby nad Labem, tel. +420 466 736 530, e-mail: kladruby@nhkladruby.cz
Digital	Date of photo	08/2017

List of other visual materials:

- 033 Detail of the landscape composition at the Josefov farmstead. View from the east. Photographer: Jiří Podrazil.
- 034 Kladruby nad Labem farmstead with the main courtyard (cour d'honneur) lined with the Classicist buildings. View from the south east. Photographer: Jiří Podrazil.
- 035 Alley of apple trees between the English stable (called Paddock) and the Josefov farmstead. Photographer: Šárka Veinhauerová.
- 036 Beginning of the Selmická Avenue at the Kladruby nad Labem farmstead. Lime (*Tilia cordata*) avenue which connects the farmsteads at Kladruby nad Labem and Františkov both from the functional and compositional aspects. View to the west. Photographer: Magdaléna Straková.
- 037 Řečanská Avenue towards the Kladruby nad Labem farmstead. Photographer: Michaela Purnochová.
- 038 Avenue with common oaks (*Quercus robur*) leading from the Kladruby nad Labem farmstead to the east, towards the Borek woodland. Photographer: Jiří Machek.
- 039 Pastures inside the cabinet de verdure with picturesque clumps between the Kladruby nad Labem and Josefov farmsteads. Photographer: Jiří Podrazil.
- 040 Pasture inside one of the cabinet de verdure with a beautiful clump and a typical white fencing in front situated between the Kladruby nad Labem and Josefov farmsteads. Photographer: Věra Kučová.
- 041 In the Mošnice Landscaped Park tree cultivars of contrasting colours represent a typical choice of the "fin de siècle". A group of purple Norway maples (*Acer platanoides* 'Schwedleri') on the left and a bright yellow sycamore (*Acer pseudo platanus* 'Leopoldii') on the right. Photographer: Jiří Podrazil.
- 042 The combination of blue spruce (*Picea pungens*) and red oak (*Quercus rubra*) in the eastern part of the Mošnice Landscaped Park with the preserved shape of the terrain. Photographer: Věra Kučová.
- 043 Samples of trees (*Ulmuslaevis*, *Quercus robur*) from the former floodplain forests integrated into the composition of the Mošnice Landscaped Park. Photographer: Magdaléna Straková.
- 044 Patches of light colour in the back are crowns of sweet chestnuts (*Castanea sativa*) in blossom in the Mošnice Landscaped Park. The ephemeral composition lasts only a short time in the season. Photographer: Zdeněk Novák.
- 045 The light, shiny point of the sycamore composition (*Acer pseudoplatanus* 'Leopoldii') in the Mošnice Landscaped Park. The ephemeral composition shows only for a short time in the season. Photographer: Zdeněk Novák.
- 046 Sycamore maple (*Acer pseudoplatanus* 'Leopoldii') at the Mošnice Park. The ephemeral type of composition which lasts only for a limited time of each year (see the previous picture). Photographer: Zdeněk Novák.
- 047 Original shape of the terrain preserved in the eastern part of the Mošnice Landscaped Park with historic solitary common oaks (*Quercus robur*). Photographer: Věra Kučová.
- 048 Characteristic landscape of the Elbe floodplain towards the east from the Řečanská Avenue with the finishing touches of solitary trees and clusters of trees. Photographer: Jiří Machek.
- 049 Production forest with cut strips and sandy lanes used for the training of carriage horses situated in the northern part of the Nominated Property. Photographer: Jiří Podrazil.
- 050 One of the bigger branches of the Kladrubský náhon irrigation and drainage system. Photographer: Lenka Gotthardová.

- 051 Nominated Landscape south of the Kladruby nad Labem farmstead. In front there is one of the manmade drainage and irrigation canals. Photographer: Jiří Podrazil.
- 052 Manmade drainage and irrigation canal lined with the linear vegetation in the centre part of the Nominated Landscape. Photographer: Jiří Podrazil.
- 053 Oxbow lake formed by the Elbe River with natural littoral vegetation in the southern part of the Nominated Landscape. Photographer: Jiří Podrazil.
- 054 Kladruby nad Labem farmstead with St Wenceslas and Leopold church joined to the Manor House and the Řečanská Avenue in the background. It starts at the farmstead south gate. View from the south-east. Photographer: Jiří Podrazil.
- 055 Kladruby nad Labem farmstead from north-east. In the background there is the Selmická Avenue leading towards the Františkov farmstead. Photographer: Jiří Podrazil.
- 056 South west front of the Řečanská Gate with the view of the focal point of the Nominated Property composition. Photographer: Jiří Podrazil.
- 057 View through the arched gate at the stables at Kladruby nad Labem towards the Řečanská Gate and Řečanská Avenue. Photographer: Jiří Podrazil.
- 058 Stable of studs. View from the southwest from the inner court. Photographer: Šárka Veinhauerová.
- 059 Stables of breeding mares at the Kladruby nad Labem farmstead. Archive of the National Stud Farm.
- 060 Stables at the Kladruby nad Labem farmstead. View from the southeast. Photographer: Jiří Podrazil.
- 061 Stables of horses in training at the Kladruby nad Labem. View from the east. Photographer: Jiří Machek.
- 062 Stables of horses in training. Archive of the National Stud Farm.
- 063 Church of St Wenceslas and Leopold with the Manor House at Kladruby nad Labem. View from the west. Photographer: Magdaléna Straková.
- 064 Church of St Wenceslas and Leopold with the Manor House at Kladruby nad Labem. View from the southwest. Photographer: Šárka Veinhauerová.
- 065 Imperial dining room in the Manor House at the Kladruby nad Labem farmstead. Archive of the National Stud Farm.
- 066 Church of St Wenceslas and Leopold at the Kladruby nad Labem farmstead. Archive of the National Stud Farm.
- 067 Graveyard with the Baroque Chapel of the Exaltation of the Holy Cross next to the Kladruby nad Labem farmstead. The residential buildings with flats for the stud farm employees and their allotments is to the right. Photographer: Jiří Podrazil.
- 068 Graveyard Chapel of the Exaltation of the Holy Cross at the Kladruby nad Labem farmstead. View from the south. Photographer: Jiří Podrazil.
- 069 West wing of the Kladruby nad Labem farmstead. Between the two residential buildings there are low stables for racing horses. Photographer: Jiří Podrazil.
- 070 Imperial Riding Hall in the Kladruby nad Labem farmstead. Photographer: Dalibor Gregor.
- 071 South wing of the building ensemble at the Kladruby nad Labem farmstead (Tack Room, Coach House and the Řečanská Gate). View from the northeast. Photographer: Jiří Podrazil.
- 072 Section of the village square at Kladruby nad Labem lined with the stud farm stables. Manor House, Church of St Wenceslas and Leopold and Leopold Stable on the left. Photographer: Šárka Veinhauerová.

- 073 Pump house from the 1920's in the Manor House garden at Kladruby nad Labem. View from the northwest. Photographer: Jiří Podrazil.
- 074 Water tower converted into a viewing tower. View from the southeast. Photographer: Magdaléna Straková.
- 075 The former stable (called "Paddock") for English thoroughbreds. Photographer: Jiří Podrazil.
- 076 View of the Františkov farmstead from southwest with the composition of pastures in the background. Photographer: Jiří Podrazil.
- 077 View of the Františkov farmstead from the southeast. Archive of the National Stud Farm.
- 006 Court at the Františkov farmstead with four oaks (*Quercus robur*) planted in the middle. View from the northwest. Photographer: Magdaléna Straková.
- 079 Main building at the Františkov farmstead with the view through the gate passage to the main courtyard. View from the east. Photographer: Michal Hurych.
- 080 View from the Františkov courtyard towards the Selmická Avenue leading to the Kladruby nad Labem farmstead. Photographer: Jiří Podrazil.
- 081 Josefov farmstead from the west. Photographer: Jiří Podrazil.
- 082 Josefov farmstead from the west. Photographer: Magdaléna Straková.
- 083 Josefov farmstead from the southeast. Photographer: Magdaléna Straková.
- 084 Barn situated south-west from the Kladruby nad Labem farmstead in an open area with woody plant species planted along its perimeter. Photographer: Jiří Podrazil.
- 085 Former Imperial Inn at Kladruby nad Labem converted into the visitors centre (it includes a multifunctional conference room, information centre and restaurant for visitors). Photographer: Jiří Podrazil.
- 086 Forester's Lodge in the centre of Kladruby nad Labem built in 1780. The former residence of the stud farm forest manager, now it houses one of the exhibitions open to the public. Photographer: Šárka Veinhauerová.
- 087 Neo-gothic Church of St Lawrence at Selmice. View from the south. Photographer: Jiří Podrazil.
- 088 Game keeper's lodge in the central part of the Nominated Property situated between the production forest and grazing fields at Na Sklepích. Photographer: Jiří Podrazil.
- 089 Former poorhouse at Selmice built in 1898 to celebrate 50 years of Emperor Franz Joseph I on the throne. Now the building is used for temporary accommodation of employees. Photographer: Jiří Podrazil.
- 090 Statue of St Donatus at Kladruby nad Labem. Photographer: Jiří Podrazil.
- 091 Mission cross with crucified Jesus at the Kladruby nad Labem village square. Photographer: Šárka Veinhauerová.
- 092 Statue of Our Lady of Sorrows at St Wenceslas and Leopold Church at Kladruby nad Labem. Photographer: Jiří Podrazil.
- 093 Statue of St John Nepomuciensis at the branch of Kladrubský náhon. Photographer: Jiří Machek.
- 094 Statue of the Guardian Angel at Na Jelenišťatech, a part of Kladruby nad Labem. Photographer: Jiří Podrazil.
- 095 Statue of St Gothard at Selmice next to the road to Týnec nad Labem. Photographer: Jiří Podrazil.
- 096 Generale Pastorella VII, one of the Kladruber studs at the Kladruby nad Labem farmstead. Photographer: Šárka Veinhauerová.

- 097 Rudolfo Curiosa V, one of the Kladruber studs. Photographer: Magdaléna Straková.
- 098 Driving a herd of Kladruber horses back from grazing. The central yard of the Františkov farmstead. View from the west. Archive of the National Stud Farm.
- 099 Team of six Kladruber horses harnessed to the golden coach of the Danish Queen Margrethe II at the Kladruby nad Labem farmstead. Photographer: Dalibor Gregor.
- 100 Team of four Kladruber horses at the Kladruby nad Labem Farmstead. Photographer: Magdaléna Straková.
- 101 Team of fourteen Kladruber horses at the main courtyard at Kladruby nad Labem during the event celebrating the Kladruber horses: "Day of Kladrubers" in 2017. Photographer: Magdaléna Straková.
- 102 Sledge pulled by a team of four Kladruber horses. Winter training in the oak avenue leading to the Mošnice Landscaped Park. Photographer: Josef Vostárek.
- 103 Team of four Kladruber horses driving through the apple tree alley towards the Josefov farmstead. Photographer: Jiří Machek.
- 104 Sledge pulled by a team of four Kladruber horses during the winter training at the Mošnice Landscaped Park. Photographer: Magdaléna Straková.
- 105 Team of four Kladruber horses during training at the Mošnice Country Park. Photographer: Šárka Veinhauerová.
- 106 Carriage driveway routed for the training of carriage horses in-hand in the Mošnice Landscaped Park. Photographer: Magdaléna Straková.
- 107 Kladruber horses in hand during training of wading. The ford at Strašovský stream in the productive forest. Photographer: Jiří Podrazil.
- 108 Ceremonial coach – carross of Ferdinand Julius Troyer from Troyerstein, the Bishop of Olomouc (1745–1758), purchased in Vienna in 1746. Foto: Markéta Ondrušková.
- 109 Kladruber horses at a state funeral drawing a gun-carriage with the coffin of the first President of the Czech Republic, Václav Havel. Photographer: Ludvík Hradilek/Aktualne.cz.
- 110 Stables of horses for teaching and training horse riding at the Kladruby nad Labem farmstead. Horse riding experience is included in some of the sightseeing tours. Photographer: Magdaléna Straková.
- 111 Production forest in the northern part of the Nominated Property during the traditional event of the Hubertus Ride. Photographer: Šárka Veinhauerová.
- 112 Demonstration of horse logging using Kladruber black horses. Photographer: Magdaléna Straková.

1 Visual materials subject to copyright



Id. No.	Caption	
001	Satellite picture of the Nominated Property. Kladruby nad Labem farmstead and the village on the right, Františkov farmstead on the left. The landscape for breeding and training carriage horses stretches between these two farmsteads and it features formally arranged pastures and grassland (in the centre), Landscaped park (to the south) and production forest (to the north).	
Format	Non exclusive cession of rights	Yes
	Photographer Contact details of copyright owner	Military Geographic and Hydrometeorological Office, Čs. odboje 676, Dobruška 518 16, © Czech Ministry of Defence 2017; Národní hřebčín Kladruby nad Labem, s.p.o. CZ 533 14 Kladruby nad Labem, tel. +420 466 736 530, e-mail: kladruby@nhkladruby.cz
Digital	Date of photo	08/2015



Id. No.	Caption	
002	The Nominated Property from the west. The Františkov farmstead is in front with the axially situated farmstead at Kladruby nad Labem in the background; the village of Selmice is in front to the right.	
Format	Non exclusive cession of rights	Yes
	Photographer Contact details of copyright owner	Kelcom International spol. s.r.o. Tomkova 142, Hradec Králové 500 03; Národní hřebčín Kladruby nad Labem, s.p.o. CZ 533 14 Kladruby nad Labem, tel. +420 466 736 530, e-mail: kladruby@nhkladruby.cz
Digital	Date of photo	06/2017



Id. No.	Caption	
003	The Nominated Property from the west from a lower viewpoint. The Františkov farmstead is in front, and the village of Selmice to the right.	
Format	Non exclusive cession of rights	Yes
	Photographer Contact details of copyright owner	Jiří Podrazil Národní hřebčín Kladruby nad Labem, s.p.o. CZ 533 14 Kladruby nad Labem, tel. +420 466 736 530, e-mail: kladruby@nhkladruby.cz
Digital	Date of photo	10/2017



Id. No.	Caption	
004	The Nominated Property from the east. The Josefov farmstead is in front with Kladruby nad Labem farmstead and village to the right; the Elbe river on the left outlines the southern border of the property and meanders about its former riverbed. The middle shows the orderly composition of pastures, divided by lines of trees and avenues.	
Format	Non exclusive cession of rights	Yes
	Photographer Contact details of copyright owner	Kelcom International spol. s.r.o. Tomkova 142, Hradec Králové 500 03; Národní hřebčín Kladruby nad Labem, s.p.o. CZ 533 14 Kladruby nad Labem, tel. +420 466 736 530, e-mail: kladruby@nhkladruby.cz
Digital	Date of photo	06/2017



Id. No.	Caption	
005	The Nominated Property from the south with the Mošnice Landscaped Park (in front), the formally arranged grazing landscape in the middle and the production forest in the background.	
Format	Non exclusive cession of rights	Yes
	Photographer Contact details of copyright owner	Jiří Podrazil Národní hřebčín Kladruby nad Labem, s.p.o. CZ 533 14 Kladruby nad Labem, tel. +420 466 736 530, e-mail: kladruby@nhkladruby.cz
Digital	Date of photo	10/2016



Id. No.	Caption	
006	The Kladruby nad Labem farmstead from the north-east. On the left is the Manor House with St Wenceslas and Leopold's Church, stables and residential buildings for the staff to the right; in the background is Selmická Avenue, leading towards the Františkov farmstead.	
Format	Non exclusive cession of rights	Yes
	Photographer Contact details of copyright owner	Aerodata, s.r.o. Národní hřebčín Kladruby nad Labem, s.p.o. CZ 533 14 Kladruby nad Labem, tel. +420 466 736 530, e-mail: kladruby@nhkladruby.cz
Digital	Date of photo	06/2017



Id. No.	Caption	
007	View of the strictly symmetric main stables at Kladruby nad Labem. The main composition axes of the Nominated Landscape meet at the arched gate. The stud (breeding stallion) stable is in the background and the water tower on the left. South-western view.	
Format	Non exclusive cession of rights	Yes
	Photographer Contact details of copyright owner	Aerodata, s.r.o. Národní hřebčín Kladruby nad Labem, s.p.o. CZ 533 14 Kladruby nad Labem, tel. +420 466 736 530, e-mail: kladruby@nhkladruby.cz
Digital	Date of photo	10/2016



Id. No.	Caption	
008	Františkov farmstead from the east. In the background, pastures divided by paths and watercourses lined with trees. The “infinite” axis crosses the farmstead towards the west.	
Format	Non exclusive cession of rights	Yes
	Photographer Contact details of copyright owner	Jiří Podrazil Národní hřebčín Kladruby nad Labem, s.p.o. CZ 533 14 Kladruby nad Labem, tel. +420 466 736 530, e-mail: kladruby@nhkladruby.cz
Digital	Date of photo	06/2017



Id. No.	Caption	
009	Detail of the landscape composition around the Františkov farmstead. View from the north-east.	
Format	Non exclusive cession of rights	Yes
	Photographer Contact details of copyright owner	Jiří Podrazil Národní hřebčín Kladruby nad Labem, s.p.o. CZ 533 14 Kladruby nad Labem, tel. +420 466 736 530, e-mail: kladruby@nhkladruby.cz
Digital	Date of photo	06/2017



Id. No.	Caption	
010	Josefov farmstead situated in the south-east part of the Nominated Property. View from the west.	
Format	Non exclusive cession of rights	Yes
	Photographer Contact details of copyright owner	Aerodata, s.r.o. Národní hřebčín Kladruby nad Labem, s.p.o. CZ 533 14 Kladruby nad Labem, tel. +420 466 736 530, e-mail: kladruby@nhkladruby.cz
Digital	Date of photo	10/2016



Id. No.	Caption	
011	Landscape south of the Kladruby nad Labem farmstead. Avenues and lines of trees form a star with six rays (étoile). On the pastures there are clumps of trees. View from the south-east.	
Format	Non exclusive cession of rights	Yes
	Photographer Contact details of copyright owner	Jiří Podrazil Národní hřebčín Kladruby nad Labem, s.p.o. CZ 533 14 Kladruby nad Labem, tel. +420 466 736 530, e-mail: kladruby@nhkladruby.cz
Digital	Date of photo	10/2017



Id. No.	Caption	
012	Pastures in the centre of the Nominated Property divided by driveways and watercourses lined with trees and avenues forming "rooms" resembling bosquets in French gardens or "cabinet de verdure". View from the east.	
Format	Non exclusive cession of rights	Yes
	Photographer Contact details of copyright owner	Jiří Podrazil Národní hřebčín Kladruby nad Labem, s.p.o. CZ 533 14 Kladruby nad Labem, tel. +420 466 736 530, e-mail: kladruby@nhkladruby.cz
Digital	Date of photo	10/2016



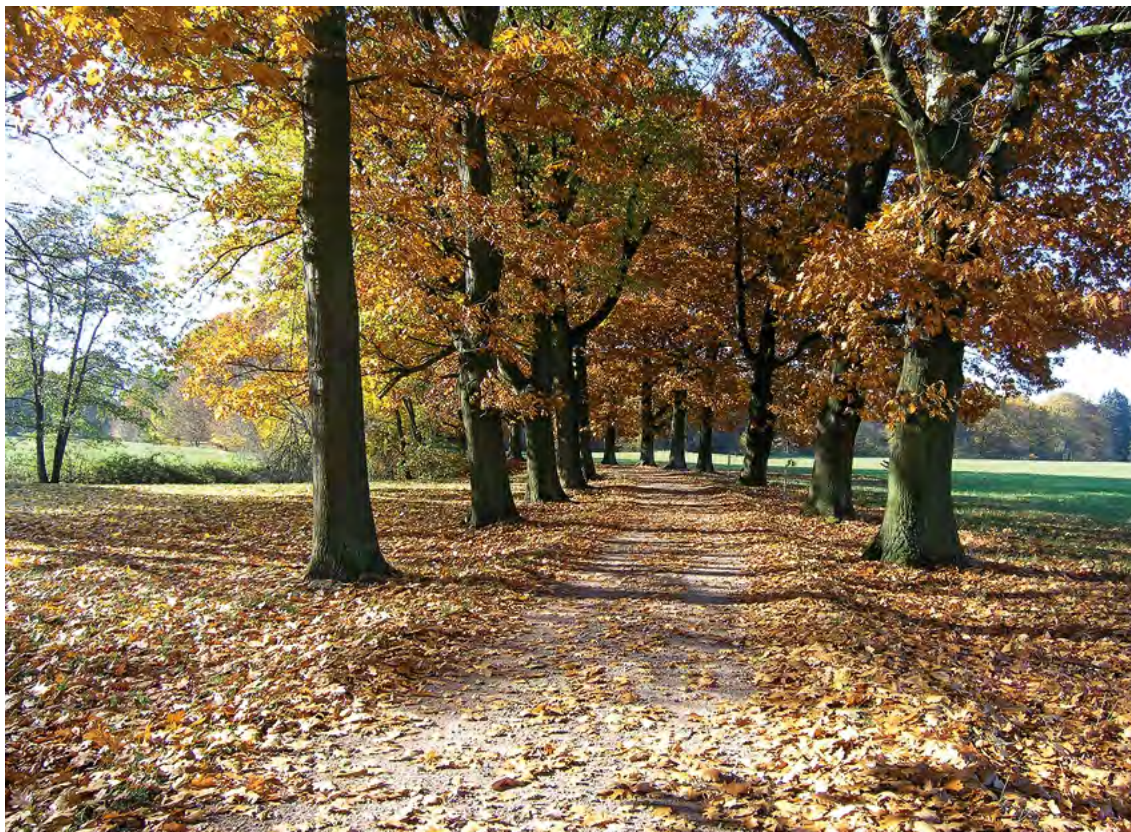
Id. No.	Caption	
013	Water mirror of an oxbow lake formed by the Elbe River in the western part of the Mošnice Landscaped Park. View from the east.	
Format	Non exclusive cession of rights	Yes
	Photographer Contact details of copyright owner	Jiří Podrazil Národní hřebčín Kladruby nad Labem, s.p.o. CZ 533 14 Kladruby nad Labem, tel. +420 466 736 530, e-mail: kladruby@nhkladruby.cz
Digital	Date of photo	06/2017



Id. No.	Caption	
014	Eastern part of the Mošnice Landscaped Park viewed from the west; the part of the Nominated Landscape resembling English landscape architecture.	
Format	Non exclusive cession of rights	Yes
	Photographer Contact details of copyright owner	Jiří Podrazil Národní hřebčín Kladruby nad Labem, s.p.o. CZ 533 14 Kladruby nad Labem, tel. +420 466 736 530, e-mail: kladruby@nhkladruby.cz
Digital	Date of photo	06/2017



Id. No.	Caption	
015	View to infinity from the Řečanská Gate at the Kladruby nad Labem to the south-west into the Řečanská Avenue lined with lime trees (<i>Tilia cordata</i>).	
Format	Non exclusive cession of rights	Yes
	Photographer Contact details of copyright owner	Jiří Podrazil Národní hřebčín Kladruby nad Labem, s.p.o. CZ 533 14 Kladruby nad Labem, tel. +420 466 736 530, e-mail: kladruby@nhkladruby.cz
Digital	Date of photo	10/2016



Id. No.	Caption	
016	Carriage driveway lined with northern red oaks (<i>Quercus rubra</i>) leading to the Mošnice Landscaped Park. The vegetation along the Kladubský náhon irrigation system in the background.	
Format	Non exclusive cession of rights	Yes
	Photographer Contact details of copyright owner	Věra Kučová Národní hřebčín Kladruby nad Labem, s.p.o. CZ 533 14 Kladruby nad Labem, tel. +420 466 736 530, e-mail: kladruby@nhkladruby.cz
Digital	Date of photo	10/2016



Id. No.	Caption	
017	Carriage driveway towards the Josefov farmstead, lined with old species of apple trees.	
Format	Non exclusive cession of rights	Yes
	Photographer Contact details of copyright owner	Magdaléna Straková Národní hřebčín Kladruby nad Labem, s.p.o. CZ 533 14 Kladruby nad Labem, tel. +420 466 736 530, e-mail: kladruby@nhkladruby.cz
Digital	Date of photo	07/2017



Id. No.	Caption	
018	Pasture inside one of the cabinet de verdure with a picturesque clump of trees situated between Kladruby nad Labem and Josefov. Typical white fencing of pastures in the background.	
Format	Non exclusive cession of rights	Yes
	Photographer Contact details of copyright owner	Michaela Dusíková Národní hřebčín Kladruby nad Labem, s.p.o. CZ 533 14 Kladruby nad Labem, tel. +420 466 736 530, e-mail: kladruby@nhkladruby.cz
Digital	Date of photo	10/2016



Id. No.	Caption	
019	Gently winding carriage driveway in the Mošnice Landscaped Park, the routing of which allows in-hand driving of team of horses.	
Format	Non exclusive cession of rights	Yes
	Photographer Contact details of copyright owner	Magdaléna Straková Národní hřebčín Kladruby nad Labem, s.p.o. CZ 533 14 Kladruby nad Labem, tel. +420 466 736 530, e-mail: kladruby@nhkladruby.cz
Digital	Date of photo	08/2016



Id. No.	Caption	
020	Use of perspective in the Mošnice Landscaped Park for boosting the illusion of depth in a similar way to paintings.	
Format	Non exclusive cession of rights	Yes
	Photographer Contact details of copyright owner	Jiří Podrazil Národní hřebčín Kladruby nad Labem, s.p.o. CZ 533 14 Kladruby nad Labem, tel. +420 466 736 530, e-mail: kladruby@nhkladruby.czz
Digital	Date of photo	05/2017



Id. No.	Caption	
021	Paddock for stallions with typical white fencing. In the background is the south wing of the stables at Kladruby nad Labem with the Řečanská Gate and Řečanská Avenue.	
Format	Non exclusive cession of rights	Yes
	Photographer Contact details of copyright owner	Jiří Podrazil Národní hřebčín Kladruby nad Labem, s.p.o. CZ 533 14 Kladruby nad Labem, tel. +420 466 736 530, e-mail: kladruby@nhkladruby.cz
Digital	Date of photo	10/2017



Id. No.	Caption	
022	One of the branches of the Kladrubský náhon irrigation and drainage system. Pastures with typical white fencing.	
Format	Non exclusive cession of rights	Yes
	Photographer Contact details of copyright owner	Jiří Machek Národní hřebčín Kladruby nad Labem, s.p.o. CZ 533 14 Kladruby nad Labem, tel. +420 466 736 530, e-mail: kladruby@nhkladruby.cz
Digital	Date of photo	03/2017



Id. No.	Caption	
023	Oxbow lake of the Elbe River in the south-eastern part on the Nominated Property.	
Format	Non exclusive cession of rights	Yes
	Photographer Contact details of copyright owner	Aerodata, s.r.o. Národní hřebčín Kladruby nad Labem, s.p.o. CZ 533 14 Kladruby nad Labem, tel. +420 466 736 530, e-mail: kladruby@nhkladruby.cz
Digital	Date of photo	10/2016



Id. No.	Caption	
024	Edge of the production forest at the northern part of the Nominated Property.	
Format	Non exclusive cession of rights	Yes
	Photographer Contact details of copyright owner	Jiří Podrazil Národní hřebčín Kladruby nad Labem, s.p.o. CZ 533 14 Kladruby nad Labem, tel. +420 466 736 530, e-mail: kladruby@nhkladruby.cz
Digital	Date of photo	10/2017



Id. No.	Caption	
025	Kladruby nad Labem main courtyard (cour d'honneur) surrounded by the Classicist stables, St Wenceslas and Leopold Church, the Manor House and south wing with the entrance gate. View from the west.	
Format	Non exclusive cession of rights	Yes
	Photographer Contact details of copyright owner	Archive of the National Stud Farm Národní hřebčín Kladruby nad Labem, s.p.o. CZ 533 14 Kladruby nad Labem, tel. +420 466 736 530, e-mail: kladruby@nhkladruby.cz
Digital	Date of photo	08/2017



Id. No.	Caption	
026	Stables for studs (breeding stallions) at the Kladruby nad Labem farmstead.	
Format	Non exclusive cession of rights	Yes
	Photographer Contact details of copyright owner	Archive of the National Stud Farm Národní hřebčín Kladruby nad Labem, s.p.o. CZ 533 14 Kladruby nad Labem, tel. +420 466 736 530, e-mail: kladruby@nhkladruby.cz
Digital	Date of photo	08/2016



Id. No.	Caption	
027	Stables for breeding mares at the Kladruby nad Labem farmstead.	
Format	Non exclusive cession of rights	Yes
	Photographer Contact details of copyright owner	Jiří Podrazil Národní hřebčín Kladruby nad Labem, s.p.o. CZ 533 14 Kladruby nad Labem, tel. +420 466 736 530, e-mail: kladruby@nhkladruby.cz
Digital	Date of photo	08/2016



Id. No.	Caption	
028	Courtyard at the Františkov farmstead with four oaks (<i>Quercus robur</i>) planted in the middle. View from the north west.	
Format	Non exclusive cession of rights	Yes
	Photographer Contact details of copyright owner	Jiří Podrazil Národní hřebčín Kladruby nad Labem, s.p.o. CZ 533 14 Kladruby nad Labem, tel. +420 466 736 530, e-mail: kladruby@nhkladruby.cz
Digital	Date of photo	09/2017



Id. No.	Caption	
029	Architectural and vegetation layout emphasising the axial “infinity” of the Nominated Landscape. View through the gate of the Františkov farmstead to Selmická Avenue. The symmetric planting of oaks in front (<i>Quercus robur</i>).	
Format	Non exclusive cession of rights	Yes
	Photographer Contact details of copyright owner	Jiří Podrazil Národní hřebčín Kladruby nad Labem, s.p.o. CZ 533 14 Kladruby nad Labem, tel. +420 466 736 530, e-mail: kladruby@nhkladruby.cz
Digital	Date of photo	09/2017



Id. No.	Caption	
030	The foal stable at the Františkov farmstead with semi-columns supporting the vault.	
Format	Non exclusive cession of rights	Yes
	Photographer Contact details of copyright owner	Šárka Veinhauerová Národní hřebčín Kladruby nad Labem, s.p.o. CZ 533 14 Kladruby nad Labem, tel. +420 466 736 530, e-mail: kladruby@nhkladruby.cz
Digital	Date of photo	07/2017



Id. No.	Caption	
031	Kladruher stud. The Kladruby nad Labem farmstead.	
Format	Non exclusive cession of rights	Yes
	Photographer Contact details of copyright owner	Magdaléna Straková Národní hřebčín Kladruby nad Labem, s.p.o. CZ 533 14 Kladruby nad Labem, tel. +420 466 736 530, e-mail: kladruby@nhkladruby.cz
Digital	Date of photo	08/2017



Id. No.	Caption	
032	Team of eight horses in the Řečanská Avenue.	
Format	Non exclusive cession of rights	Yes
	Photographer Contact details of copyright owner	Marcela Kvochová Národní hřebčín Kladruby nad Labem, s.p.o. CZ 533 14 Kladruby nad Labem, tel. +420 466 736 530, e-mail: kladruby@nhkladruby.cz
Digital	Date of photo	08/2017

2 Other visual materials

2.1 Aerial photographs



033 Detail of the landscape composition at the Josefov farmstead. View from the east.
Photographer: Jiří Podrazil.



034 Kladruby nad Labem farmstead with the main courtyard (cour d'honneur) lined with the Classicist buildings. View from the south east. Photographer: Jiří Podrazil.

2.2 Vegetation components on the site of the Nominated Property

2.2.1 Vegetation accompanying roads and watercourses



035 Alley of apple trees between the English stable (called Paddock) and the Josefov farmstead.
Photographer: Šárka Veinhauerová.



036 Beginning of the Selmická Avenue at the Kladruby nad Labem farmstead. Lime (*Tilia cordata*) avenue which connects the farmsteads at Kladruby nad Labem and Františkov both from the functional and compositional aspects. View to the west. Photographer: Magdaléna Straková.



037 Řečanská Avenue towards the Kladruby nad Labem farmstead. Photographer: Michaela Purnochová.



038 Avenue with common oaks (*Quercus robur*) leading from the Kladruby nad Labem farmstead to the east, towards the Borek woodland. Photographer: Jiří Machek.

2.2.2 Groups of trees (clumps) on the pastures



039 Pastures inside the cabinet de verdure with picturesque clumps between the Kladruby nad Labem and Josefov farmsteads. Photographer: Jiří Podrazil.



040 Pasture inside one of the cabinet de verdure with a beautiful clump and a typical white fencing in front situated between the Kladruby nad Labem and Josefov farmsteads. Photographer: Věra Kučová.

2.3 Romantic Landscape Park of Mošnice



- 041 In the Mošnice Landscaped Park tree cultivars of contrasting colours represent a typical choice of the “fin de siècle”. A group of purple Norway maples (*Acer platanoides* ‘Schwedleri’) on the left and a bright yellow sycamore (*Acer pseudo platanus* ‘Leopoldii’) on the right. Photographer: Jiří Podrazil.



042 The combination of blue spruce (*Picea pungens*) and red oak (*Quercus rubra*) in the eastern part of the Mošnice Landscaped Park with the preserved shape of the terrain. Photographer: Věra Kučová.



043 Samples of trees (*Ulmus laevis*, *Quercus robur*) from the former floodplain forests integrated into the composition of the Mošnice Landscaped Park. Photographer: Magdaléna Straková.



044 Patches of light colour in the back are crowns of sweet chestnuts (*Castanea sativa*) in blossom in the Mošnice Landscaped Park. The ephemeral composition lasts only a short time in the season. Photographer: Zdeněk Novák.



045 The light, shiny point of the sycamore composition (*Acer pseudoplatanus* 'Leopoldii') in the Mošnice Landscaped Park. The ephemeral composition shows only for a short time in the season. Photographer: Zdeněk Novák.



046 Sycamore maple (*Acer pseudoplatanus* 'Leopoldii') at the Mošnice Park. The ephemeral type of composition which lasts only for a limited time of each year (see the previous picture). Photographer: Zdeněk Novák.



047 Original shape of the terrain preserved in the eastern part of the Mošnice Landscaped Park with historic solitary common oaks (*Quercus robur*). Photographer: Věra Kučová.



048 Characteristic landscape of the Elbe floodplain towards the east from the Řečanská Avenue with the finishing touches of solitary trees and clusters of trees. Photographer: Jiří Machek.

2.4 Productive forest

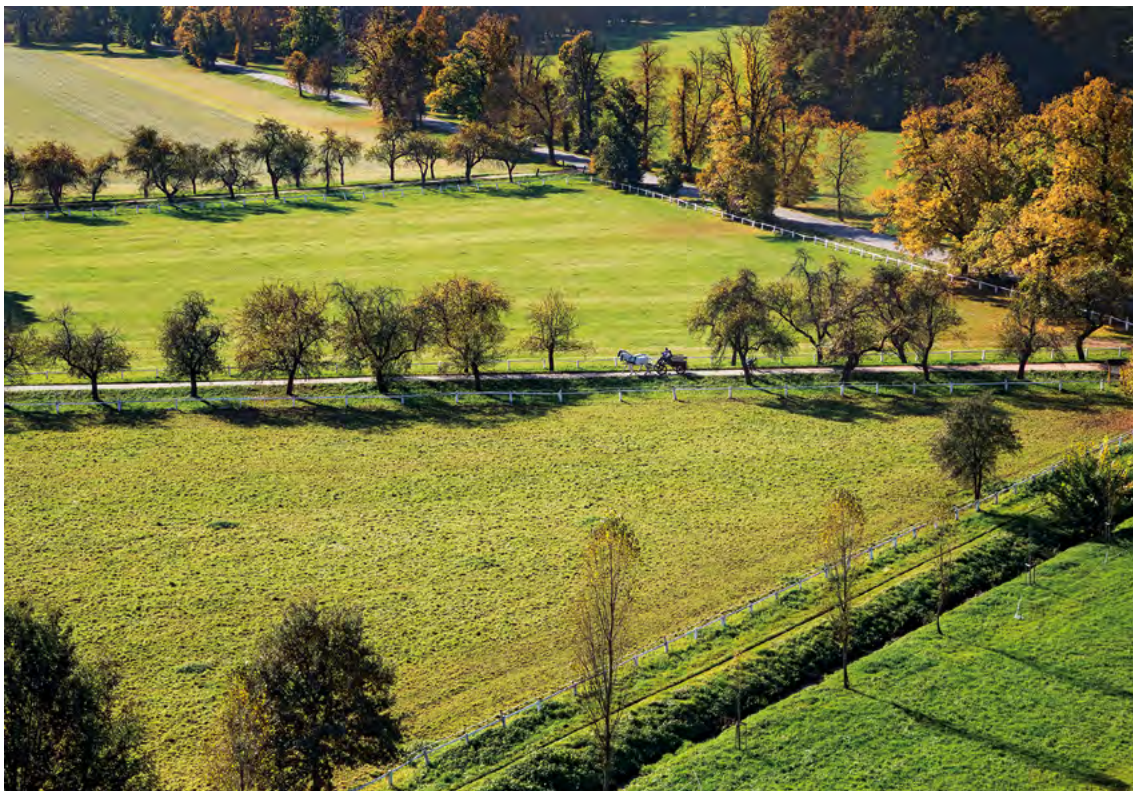


049 Production forest with cut strips and sandy lanes used for the training of carriage horses situated in the northern part of the Nominated Property. Photographer: Jiří Podrazil.

2.5 Water features in the landscape



050 One of the bigger branches of the Kladubský náhon irrigation and drainage system. Photographer: Lenka Gotthardová.



051 Nominated Landscape south of the Kladruby nad Labem farmstead. In front there is one of the manmade drainage and irrigation canals. Photographer: Jiří Podrazil.



052 Manmade drainage and irrigation canal lined with the linear vegetation in the centre part of the Nominated Landscape. Photographer: Jiří Podrazil.



053 Oxbow lake formed by the Elbe River with natural littoral vegetation in the southern part of the Nominated Landscape. Photographer: Jiří Podrazil.

2.6 Farmsteads with stables

2.6.1 Kladruby nad Labem farmstead



054 Kladruby nad Labem farmstead with St Wenceslas and Leopold church joined to the Manor House and the Řečanská Avenue in the background. It starts at the farmstead south gate. View from the south-east. Photographer: Jiří Podrazil.



055 Kladruby nad Labem farmstead from north-east. In the background there is the Selmická Avenue leading towards the Františkov farmstead. Photographer: Jiří Podrazil.



056 South west front of the Řečanská Gate with the view of the focal point of the Nominated Property composition. Photographer: Jiří Podrazil.



057 View through the arched gate at the stables at Kladruby nad Labem towards the stables at Kladruby nad Labem towards the Řečanská Gate and Řečanská Avenue. Photographer: Jiří Podrazil.



058 Stable of studs. View from the southwest from the inner court. Photographer: Šárka Veinhauerová.



059 Stables of breeding mares at the Kladruby nad Labem farmstead.
Archive of the National Stud Farm.



060 Stables at the Kladruby nad Labem farmstead. View from the southeast.
Photographer: Jiří Podrazil.



061 Stables of horses in training at the Kladruby nad Labem. View from the east.
Photographer: Jiří Machek.



062 Stables of horses in training. Archive of the National Stud Farm.



063 Church of St Wenceslas and Leopold with the Manor House at Kladruby nad Labem. View from the west. Photographer: Magdaléna Straková.



064 Church of St Wenceslas and Leopold with the Manor House at Kladruby nad Labem. View from the southwest. Photographer: Šárka Veinhauerová.



065 Imperial dining room in the Manor House at the Kladruby nad Labem farmstead.
Archive of the National Stud Farm.



066 Church of St Wenceslas and Leopold at the Kladruby nad Labem farmstead.
Archive of the National Stud Farm.



067 Graveyard with the Baroque Chapel of the Exaltation of the Holy Cross next to the Kladruby nad Labem farmstead. The residential buildings with flats for the stud farm employees and their allotments is to the right. Photographer: Jiří Podrazil.



068 Graveyard Chapel of the Exaltation of the Holy Cross at the Kladruby nad Labem farmstead. View from the south. Photographer: Jiří Podrazil.



069 West wing of the Kladruby nad Labem farmstead. Between the two residential buildings there are low stables for racing horses. Photographer: Jiří Podrazil.



070 Imperial Riding Hall in the Kladruby nad Labem farmstead. Photographer: Dalibor Gregor.



071 South wing of the building ensemble at the Kladruby nad Labem farmstead (Tack Room, Coach House and the Řečanská Gate). View from the northeast. Photographer: Jiří Podrazil.



072 Section of the village square at Kladruby nad Labem lined with the stud farm stables. Manor House, Church of St Wenceslas and Leopold and Leopold Stable on the left. Photographer: Šárka Veinhauerová.



073 Pump house from the 1920's in the Manor House garden at Kladruby nad Labem. View from the northwest. Photographer: Jiří Podrazil.



074 Water tower converted into a viewing tower. View from the southeast. Photographer: Magdaléna Straková.



075 The former stable (called "Paddock") for English thoroughbreds. Photographer: Jiří Podrazil.

2.6.2 Františkov farmstead



076 View of the Františkov farmstead from southwest with the composition of pastures in the background. Photographer: Jiří Podrazil.



077 View of the Františkov farmstead from the southeast. Archive of the National Stud Farm.



078 Court at the Františkov farmstead with four oaks (*Quercus robur*) planted in the middle. View from the northwest. Photographer: Magdaléna Straková.



079 Main building at the Františkov farmstead with the view through the gate passage to the main courtyard. View from the east. Photographer: Michal Hurých.



080 View from the Františkov courtyard towards the Selmická Avenue leading to the Kladruby nad Labem farmstead. Photographer: Jiří Podrazil.

2.6.3 Josefov farmstead



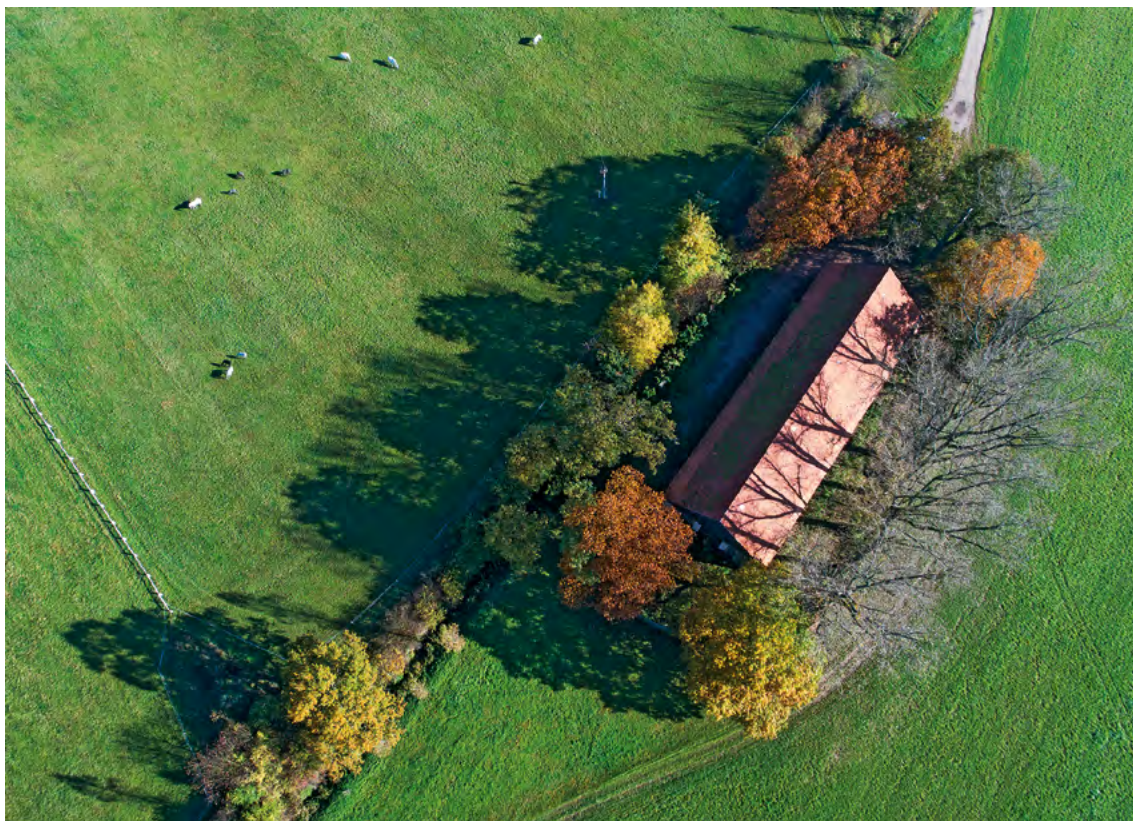
081 Josefov farmstead from the west. Photographer: Jiří Podrazil.



082 Josefov farmstead from the west. Photographer: Magdaléna Straková.



083 Josefov farmstead from the southeast. Photographer: Magdaléna Straková.



084 Barn situated south-west from the Kladruby nad Labem farmstead in an open area with woody plant species planted along its perimeter. Photographer: Jiří Podrazil.

2.7 Other important buildings on the site of the Nominated Property



085 Former Imperial Inn at Kladruby nad Labem converted into the visitors centre (it includes a multifunctional conference room, information centre and restaurant for visitors).
Photographer: Jiří Podrazil.



086 Forester's Lodge in the centre of Kladruby nad Labem built in 1780. The former residence of the stud farm forest manager, now it houses one of the exhibitions open to the public.
Photographer: Šárka Veinhauerová.



087 Neo-gothic Church of St Lawrence at Selmice. View from the south.
Photographer: Jiří Podrazil.



088 Game keeper's lodge in the central part of the Nominated Property situated between the production forest and grazing fields at Na Sklepích. Photographer: Jiří Podrazil.



089 Former poorhouse at Selmice built in 1898 to celebrate 50 years of Emperor Franz Joseph I on the throne. Now the building is used for temporary accommodation of employees.
Photographer: Jiří Podrazil.

2.8 Artefact on the site of the Nominated Property



090 Statue of St Donatus at Kladruby nad Labem. Photographer: Jiří Podrazil.



091 Mission cross with crucified Jesus at the Kladruby nad Labem village square.
Photographer: Šárka Veinhauerová.



092 Statue of Our Lady of Sorrows at St Wenceslas and Leopold Church at Kladruby nad Labem.
Photographer: Jiří Podrazil.



093 Statue of St John Nepomucienis at the branch of Kladrubský náhon.
Photographer: Jiří Machek.



094 Statue of the Guardian Angel at Na Jelenišťatech, a part of Kladruby nad Labem. Photographer: Jiří Podrazil.



095 Statue of St Gothard at Selmice next to the road to Týnec nad Labem. Photographer: Jiří Podrazil.

2.9 Kladruber gala carrossier in training and service



096 Generale Pastorella VII, one of the Kladruber studs at the Kladruby nad Labem farmstead. Photographer: Šárka Veinhauerová.



097 Rudolfo Curiosa V, one of the Kladruber studs. Photographer: Magdaléna Straková.



098 Driving a herd of Kladruber horses back from grazing. The central yard of the Františkov farmstead. View from the west. Archive of the National Stud Farm.



099 Team of six Kladruber horses harnessed to the golden coach of the Danish Queen Margrethe II at the Kladruby nad Labem farmstead. Photographer: Dalibor Gregor.



100 Team of four Kladruber horses at the Kladruby nad Labem Farmstead.
Photographer: Magdaléna Straková.



101 Team of fourteen Kladruber horses at the main courtyard at Kladruby nad Labem during the event celebrating the Kladruber horses: "Day of Kladrubers" in 2017.
Photographer: Magdaléna Straková.



102 Sledge pulled by a team of four Kladruber horses. Winter training in the oak avenue leading to the Mošnice Landscaped Park. Photographer: Josef Vostárek.



103 Team of four Kladruber horses driving through the apple tree alley towards the Josefov farmstead. Photographer: Jiří Machek.



104 Sledge pulled by a team of four Kladruber horses during the winter training at the Mošnice Landscaped Park. Photographer: Magdaléna Straková.



105 Team of four Kladruber horses during training at the Mošnice Landscaped Park. Photographer: Šárka Veinhauerová.



106 Carriage driveway routed for the training of carriage horses in-hand in the Mošnice Landscaped Park. Photographer: Magdaléna Straková.



107 Kladruber horses in hand during training of wading. The ford at Strašovský stream in the productive forest. Photographer: Jiří Podrazil.



108 Ceremonial coach – carross of Ferdinand Julius Troyer from Troyerstein, the Bishop of Olomouc (1745–1758), purchased in Vienna in 1746. Foto: Markéta Ondrušková.



109 Kladruber horses at a state funeral drawing a gun-carriage with the coffin of the first President of the Czech Republic, Václav Havel. Photographer: Ludvík Hradilek/Aktualne.cz.

2.10 Nominated Property and its visitors



110 Stables of horses for teaching and training horse riding at the Kladruby nad Labem farmstead. Horse riding experience is included in some of the sightseeing tours. Photographer: Magdaléna Straková.



111 Production forest in the northern part of the Nominated Property during the traditional event of the Hubertus Ride. Photographer: Šárka Veinhauerová.



112 Demonstration of horse logging using Kladruber black horses.
Photographer: Magdaléna Straková.

LANDSCAPE FOR BREEDING AND TRAINING
OF CEREMONIAL CARRIAGE HORSES
AT KLADRUBY NAD LABEM

2.2

HISTORICAL PICTURES OF THE NOMINATED PROPERTY

Annex 2
Nominated Property in Pictures

CZECH REPUBLIC
2018

List of historical pictures of the Nominated Property:

- 001 Johann Georg de Hamilton: Herd of Kladruber horses. The Kladruby nad Labem farmstead in the background – from the left: graveyard chapel, stables, church and Imperial Manor house. Photoprint of the painting from 1725.
- 002 Johann Georg de Hamilton: Herd of Kladruber horses. Kladruby nad Labem farmstead in the background – from the left: graveyard chapel, stables, church and Imperial Manor house. Photoprint of the George Hamilton's painting, not dated.
- 003 Anonym: Herd of Kladruber horses during the great flood of Kladruby nad Labem. The Kladruby nad Labem farmstead in the background – from the left: graveyard chapel, stables, church and Imperial Manor house. Photoprint of the painting from 1734. National Heritage Institute. Litomyšl Castle.
- 004 Johann Georg Schütz (most probably): Kladruby nad Labem farmstead. Graveyard chapel in front, farm buildings and stables, church and Imperial Manor house with the garden in the background. Photoprint of the painting from 1779. National Heritage Institute. Slatiňany Castle.
- 005 Johann Georg Schütz (most probably): Selmice village with the historical farmstead (Starý Kštit). Photoprint of the painting from 1779. National Heritage Institute. Slatiňany Castle.
- 006 František Bíza: Kladruby nad Labem farmstead. On the left the graveyard chapel and the stables with the dwellings for stud farm workers, on the right the building with stables and granary floors. Photoprint of the picture from 1874 painted at the occasion of the visit of the Imperial couple. Copied from the historical periodical Světozor: list pro zábavu a literaturu (Světozor: magazine for entertainment and literature.). Vienna 1874.
- 007 Anonym: Kladruby nad Labem farmstead after the Classicist reconstruction and completion. The view from the northeast, the Elbe meanders and riparian forest in Mošnice prior to the foundation of the landscape park. Photoprint of the farmstead picture from 1829–1831. Not dated.
- 008 Anonym: Františkov farmstead after the Classicist reconstruction on a simplified painting of spacial relations. On the right the historical farmstead (Starý Kštit) replaced by Františkov, on the right the forest massif. View from the east. Photoprint of the farmstead picture from 1829–1831. Not dated.
- 009 Johann Erdmann Gottlieb Prestel: Team of eight Kladruber horses drawing the Imperial carrossa in front of St Stephen's Cathedral in Vienna. Photoprint of the picture from 1851. Kaiserliche Wagenburg Wien.
- 010 Selmická Avenue lined with lime trees (*Tilia cordata*) – the main communication and composition axes between the Kladruby nad Labem and Františkov farmsteads (vista in the background). A photograph from the end of 19th century. National Stud Farm Kladruby nad Labem, s.p.o. Archive.
- 011 Paddock stable for English thoroughbreds built south of the Kladruby nad Labem stables in 1865. View from the east. Photograph from the end of 19th century. National Stud Farm Kladruby nad Labem, s.p.o. Archive.
- 012 View of the stable buildings at the Kladruby nad Labem farmstead with a new water tower. View from the northwest. Photograph from the 1930s. National Stud Farm at Kladruby nad Labem, s.p.o. Archive.

- 013 Kladruby nad Labem farmstead courtyard (cour d'honneur) bordered by the stables, St Wenceslas and Leopold's church and Imperial Manor house. View from the west. Photograph from the first half of the 20th century. National Heritage Institute, General Directorate. Photographic Documents Archive.
- 014 Coach and two Kladruber horses driving the first Czechoslovak President Tomáš Garrigue Masaryk and the Prime Minister Antonín Švehla. Photograph from 1927. National Stud Farm at Kladruby nad Labem, s.p.o. Archive.
- 015 Aerial photograph of the Nominated Property from 1938. On the right the Kladruby farmstead and village, on the left the Františkov farmstead. Between the farmsteads and in their neighbourhood lies the landscape for breeding carriage horses formed by formally segmented pastures and meadows (in the middle), landscape park (in the south) and production forest (in the north). Military Geographic and Hydrometeorologic Authority, Dobruška © Czech Ministry of Defence (Ministerstvo obrany ČR) 2009.
- 016 Aerial photograph of the Mošnice Landscaped Park situated in the southern section of the Nominated Property from 1938. Military Geographic and Hydrometeorologic Authority, © Czech Ministry of Defence (Ministerstvo obrany ČR) 2009.
- 017 Photograph (1901) of Anton Umlauf (1858–1919), the landscape architect of the Mošnice Landscaped Park. Accessible on <http://epulettar.hu/cikk/gemenc-folytatodik-a-karapancsai-vadaszkastely-kertjenek-megujulasa>.

1 Prints of historic artworks



001 Johann Georg de Hamilton: Herd of Kladruber horses. The Kladruby nad Labem farmstead in the background – from the left: graveyard chapel, stables, church and Imperial Manor house. Photoprint of the painting from 1725.



002 Johann Georg de Hamilton: Herd of Kladruber horses. Kladruby nad Labem farmstead in the background – from the left: graveyard chapel, stables, church and Imperial Manor house. Photoprint of the George Hamilton's painting, not dated.



003 Anonym: Herd of Kladruber horses during the great flood of Kladruby nad Labem. The Kladruby nad Labem farmstead in the background – from the left: graveyard chapel, stables, church and Imperial Manor house. Photoprint of the painting from 1734. National Heritage Institute. Litomyšl Castle.



004 Johann Georg Schütz (most probably): Kladruby nad Labem farmstead. Graveyard chapel in front, farm buildings and stables, church and Imperial Manor house with the garden in the background. Photoprint of the painting from 1779. National Heritage Institute. Slatiňany Castle.



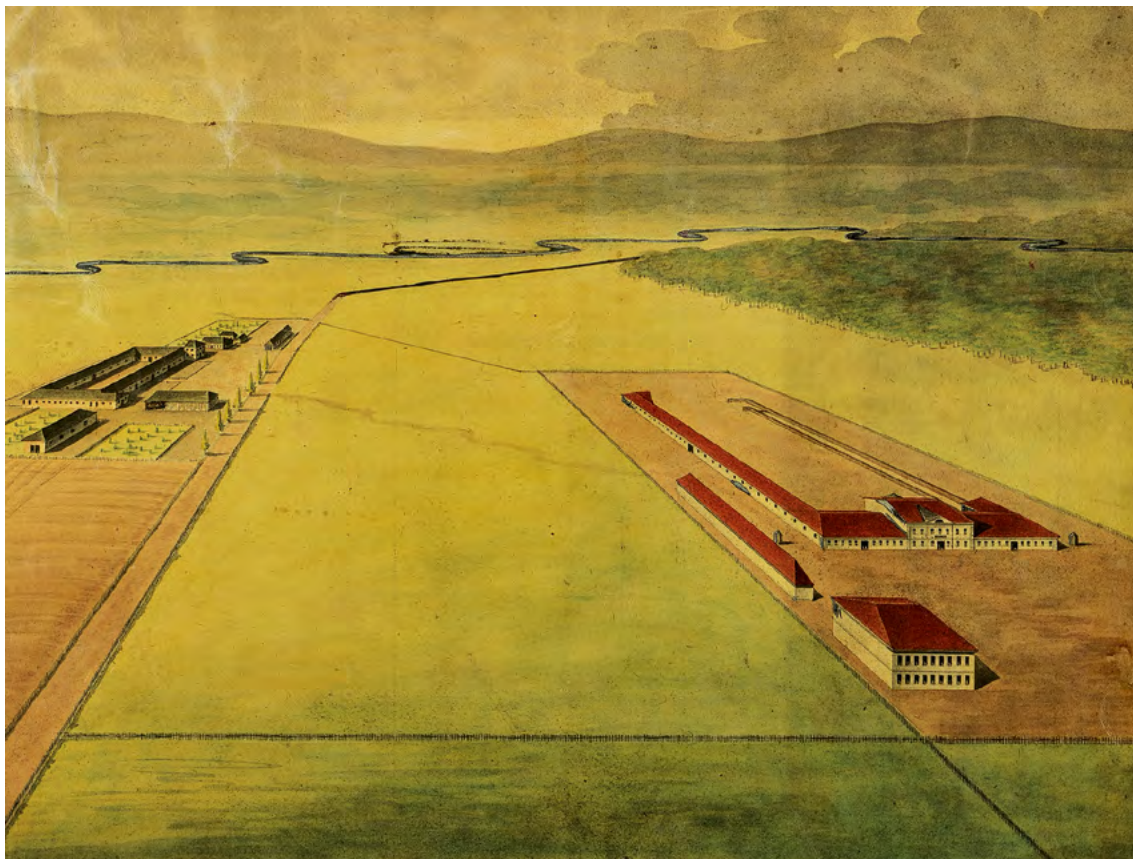
005 Johann Georg Schütz (most probably): Selmice village with the historical farmstead (Starý Kštit). Photoprint of the painting from 1779. National Heritage Institute. Slatiňany Castle.



006 František Bíza: Kladruby nad Labem farmstead. On the left the graveyard chapel and the stables with the dwellings for stud farm workers, on the right the building with stables and granary floors. Photoprint of the picture from 1874 painted at the occasion of the visit of the Imperial couple. Copied from the historical periodical *Světozor: list pro zábavu a literaturu* (*Světozor: magazine for entertainment and literature.*) Vienna 1874.



007 Anonym: Kladruby nad Labem farmstead after the Classicist reconstruction and completion. The view from the northeast, the Elbe meanders and riparian forest in Mošnice prior to the foundation of the landscape park. Photoprint of the farmstead picture from 1829–1831. Not dated.



008 Anonym: Františkov farmstead after the Classicist reconstruction on a simplified painting of spacial relations. On the right the historical farmstead (Starý Kštit) replaced by Františkov, on the right the forest massif. View from the east. Photoprint of the farmstead picture from 1829–1831. Not dated.



009 Johann Erdmann Gottlieb Prestel: Team of eight Kladruber horses drawing the Imperial carrossa in front of St Stephen's Cathedral in Vienna. Photoprint of the picture from 1851. Kaiserliche Wagenburg Wien.

2 Prints of historical photographs



- 010 Selmická Avenue lined with lime trees (*Tilia cordata*) – the main communication and composition axes between the Kladruby nad Labem and Františkov farmsteads (vista in the background). A photograph from the end of 19th century. National Stud Farm Kladruby nad Labem, s.p.o. Archive.



- 011 Paddock stable for English thoroughbreds built south of the Kladruby nad Labem stables in 1865. View from the east. Photograph from the end of 19th century. National Stud Farm Kladruby nad Labem, s.p.o. Archive.



012 View of the stable buildings at the Kladruby nad Labem farmstead with a new water tower. View from the northwest. Photograph from the 1930s. National Stud Farm at Kladruby nad Labem, s.p.o. Archive.



013 Kladruby nad Labem farmstead courtyard (cour d'honneur) bordered by the stables, St Wenceslas and Leopold's church and Imperial Manor house. View from the west. Photograph from the first half of the 20th century. National Heritage Institute, General Directorate. Photographic Documents Archive.



014 Coach and two Kladruber horses driving the first Czechoslovak President Tomáš Garrigue Masaryk and the Prime Minister Antonín Švehla. Photograph from 1927. National Stud Farm at Kladruby nad Labem, s.p.o. Archive.



- 015 Aerial photograph of the Nominated Property from 1938. On the right the Kladruby farmstead and village, on the left the Františkov farmstead. Between the farmsteads and in their neighbourhood lies the landscape for breeding carriage horses formed by formally segmented pastures and meadows (in the middle), landscape park (in the south) and production forest (in the north). Military Geographic and Hydrometeorologic Authority, Dobruška © Czech Ministry of Defence (Ministerstvo obrany ČR) 2009.



- 016 Aerial photograph of the Mošnice Landscaped Park situated in the southern section of the Nominated Property from 1938. Military Geographic and Hydrometeorologic Authority, © Czech Ministry of Defence (Ministerstvo obrany ČR) 2009.



017 Photograph (1901) of Anton Umlauf (1858–1919), the landscape architect of the Mošnice Landscaped Park. Accessible on <http://epulettar.hu/cikk/gemenc-folytatodik-a-karapancsai-vadaszkastely-kertjenek-megujulasa>.

